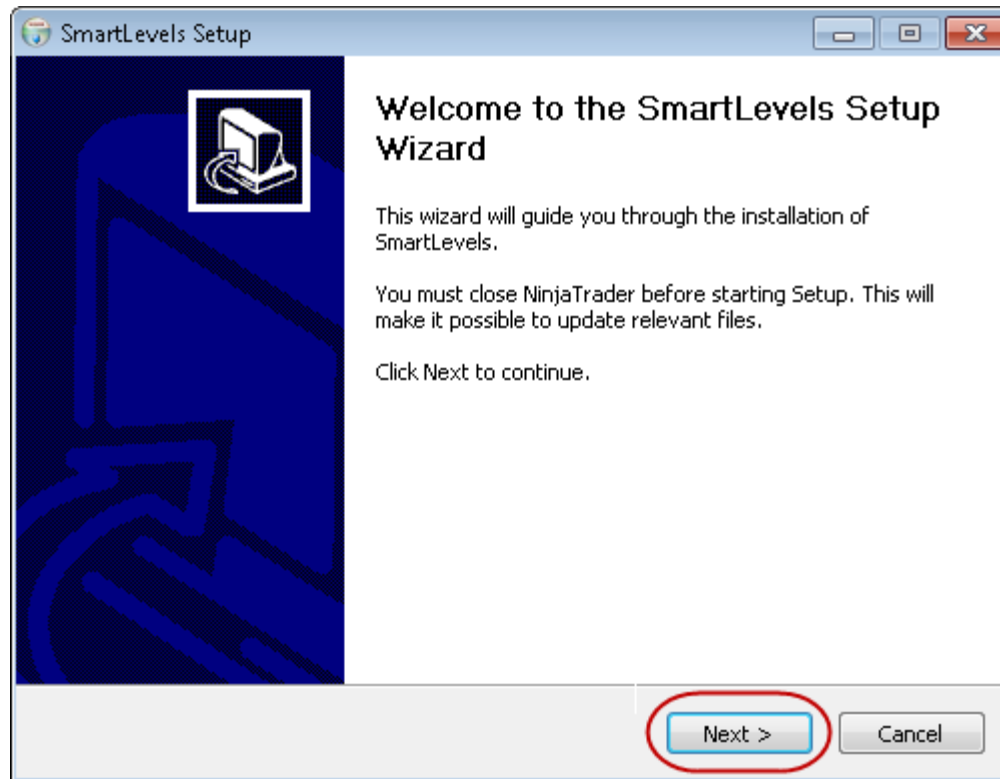


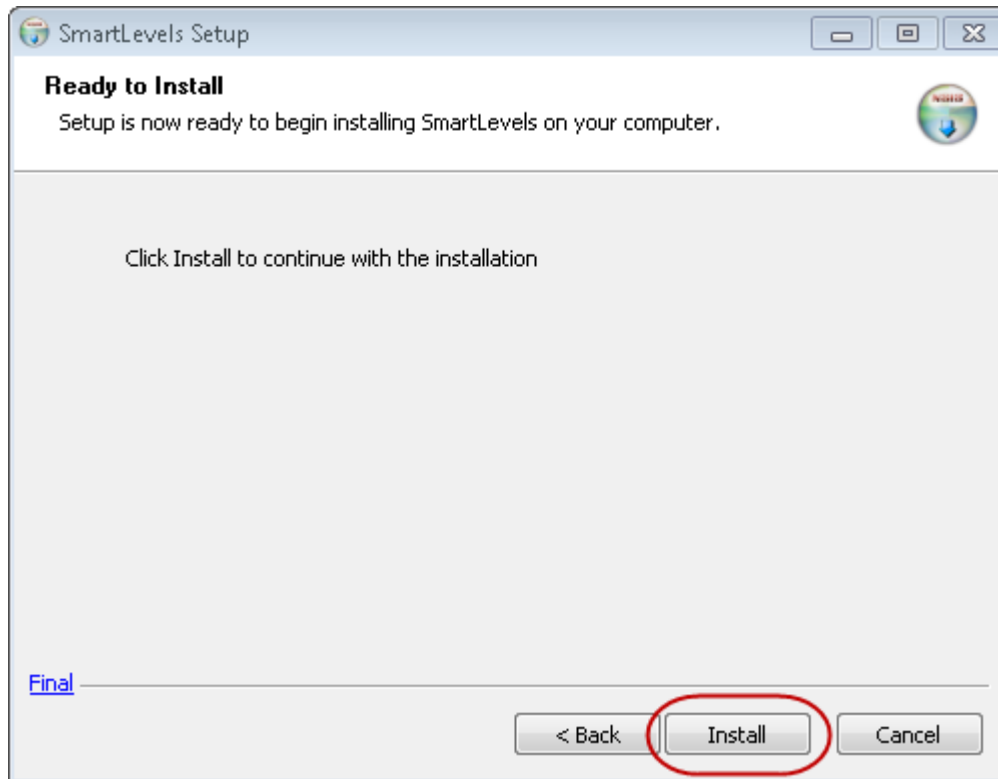


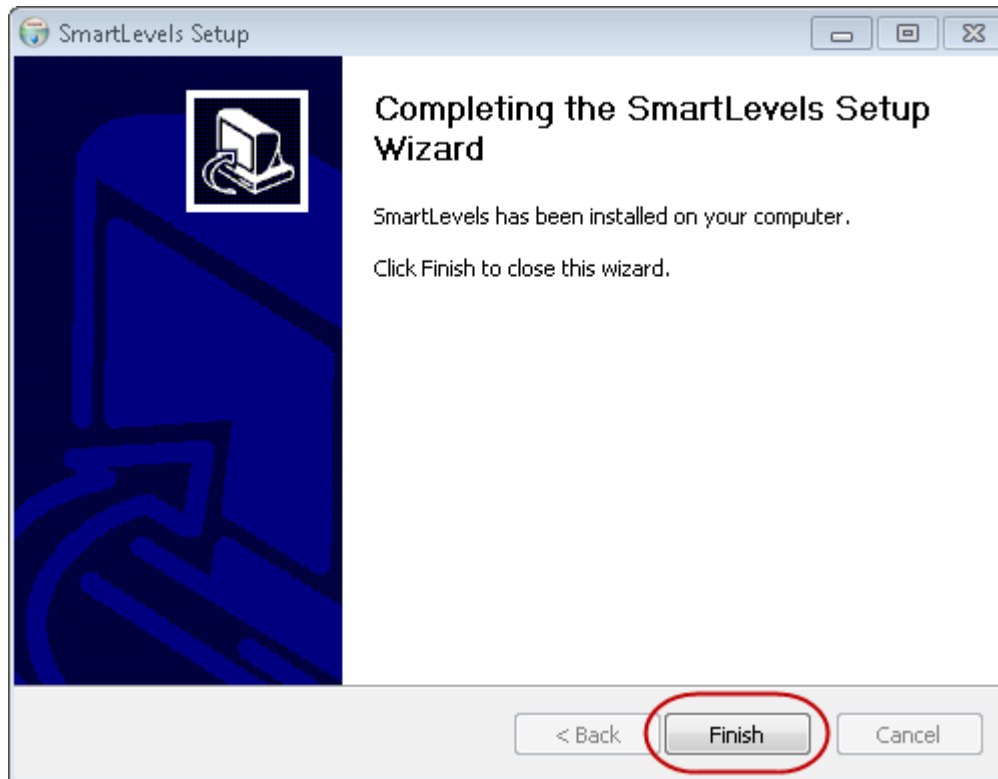
SMARTLEVELS

***SmartLevels Indicator
NinjaTrader 7
Installation Guide***



- The SmartLevels NinjaTrader Indicator is designed to run in NinjaTrader 7 Only
- Download and Run the installation file at the following link
- http://www.EminiSmartLevels.com/SmartLevels_NT7_Setup_v1.exe





SmartLevels Setup



Completing the SmartLevels Setup Wizard

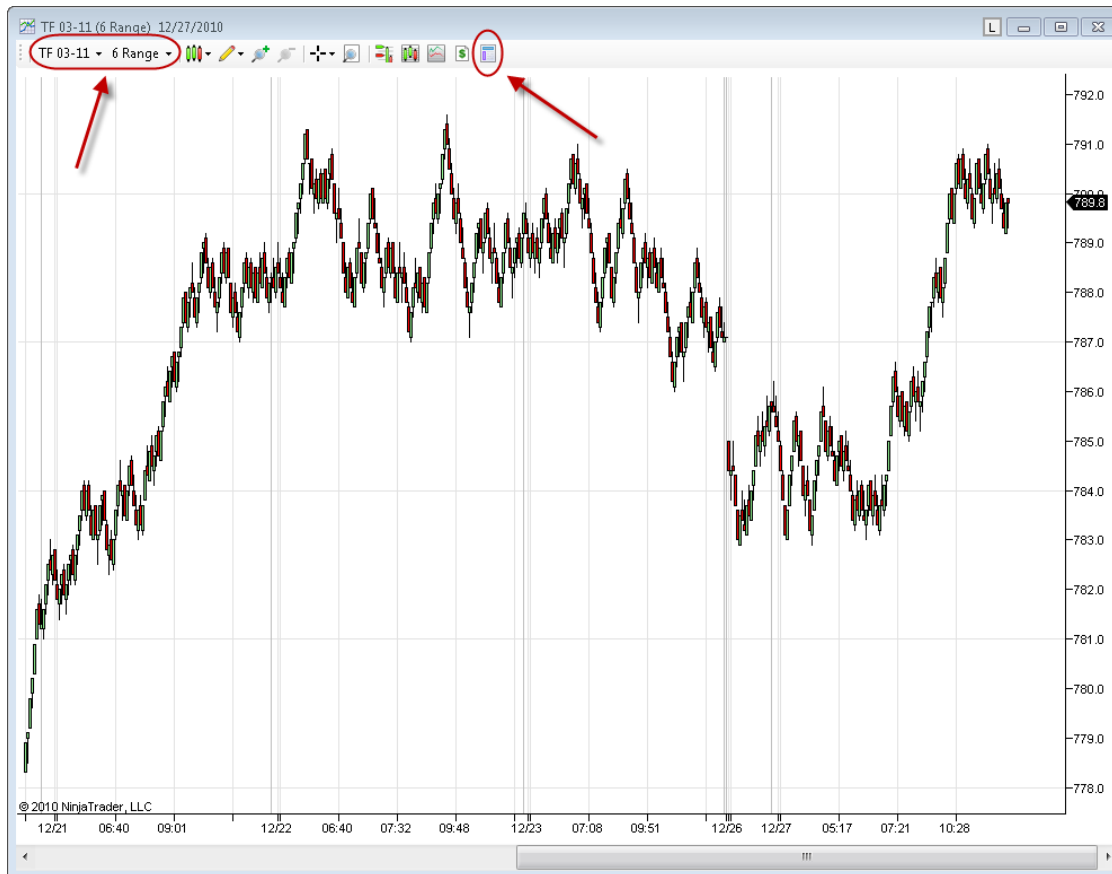
SmartLevels has been installed on your computer .

Click Finish to close this wizard.

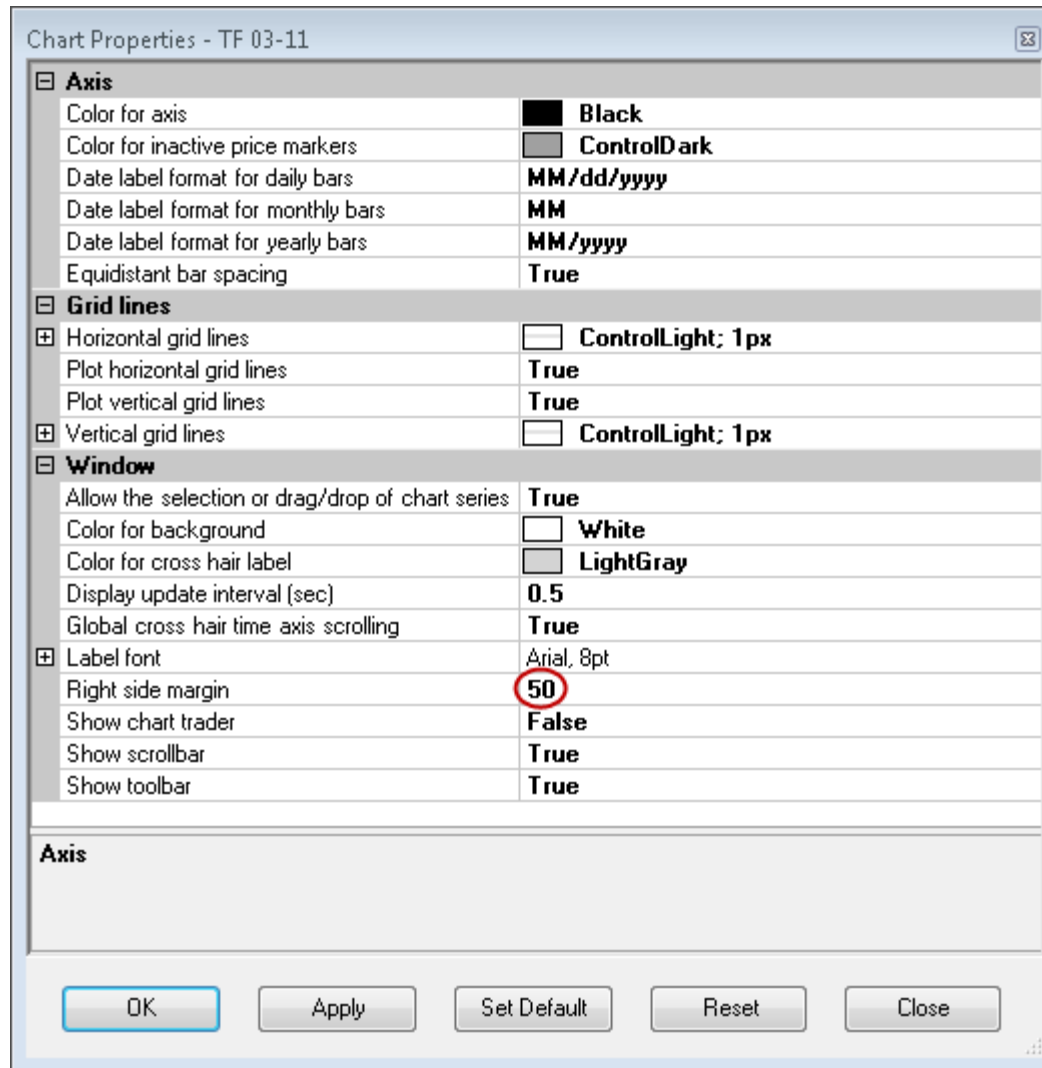
< Back

Finish

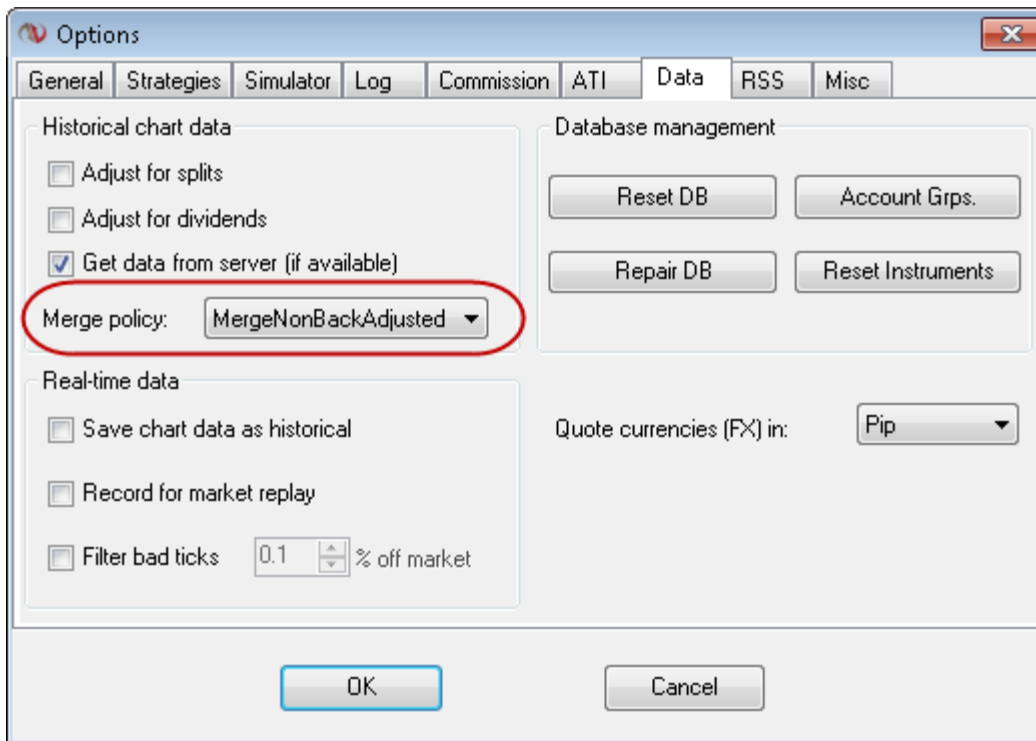
Cancel



- Set the Chart to the desired Symbol and Data Series
 - Right now, the only symbols available are the TF, the ES and the CL
- Ensure at least 5 days of data is displayed on the chart
- SmartLevels will be returned for a maximum of 20 calendar days from the last day on the chart
- Click the Chart Properties button



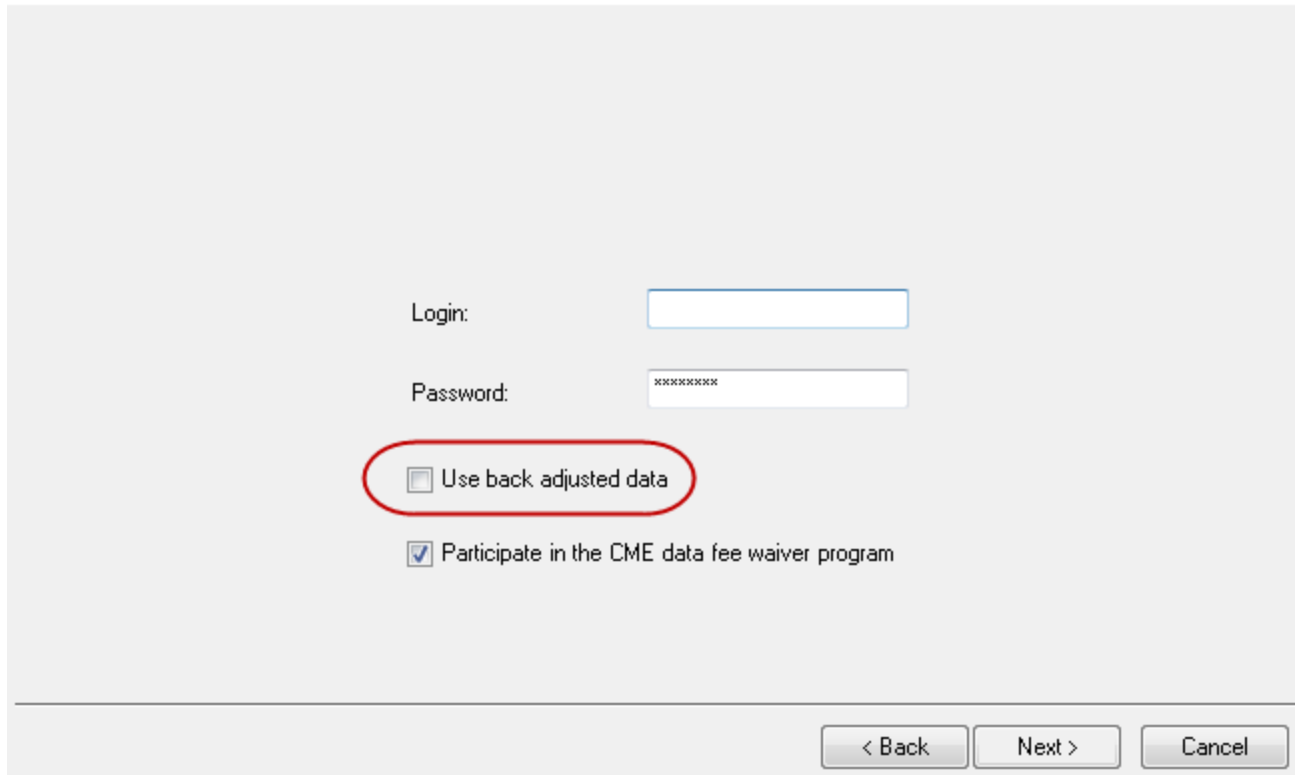
Set the Right Side Margin to 50 or greater to allow the SmartLevel labels to display properly



- Select Tools/Options... from the main menu
- On the Data Tab, Set the Merge Policy to “MergeNonBackAdjusted”
- SmartLevels are created for use with live data not theoretical Backward Adjusted data
- If you put the SmartLevels on Backward Adjusted data, there will no longer be a relationship between the SmartLevels and the data.

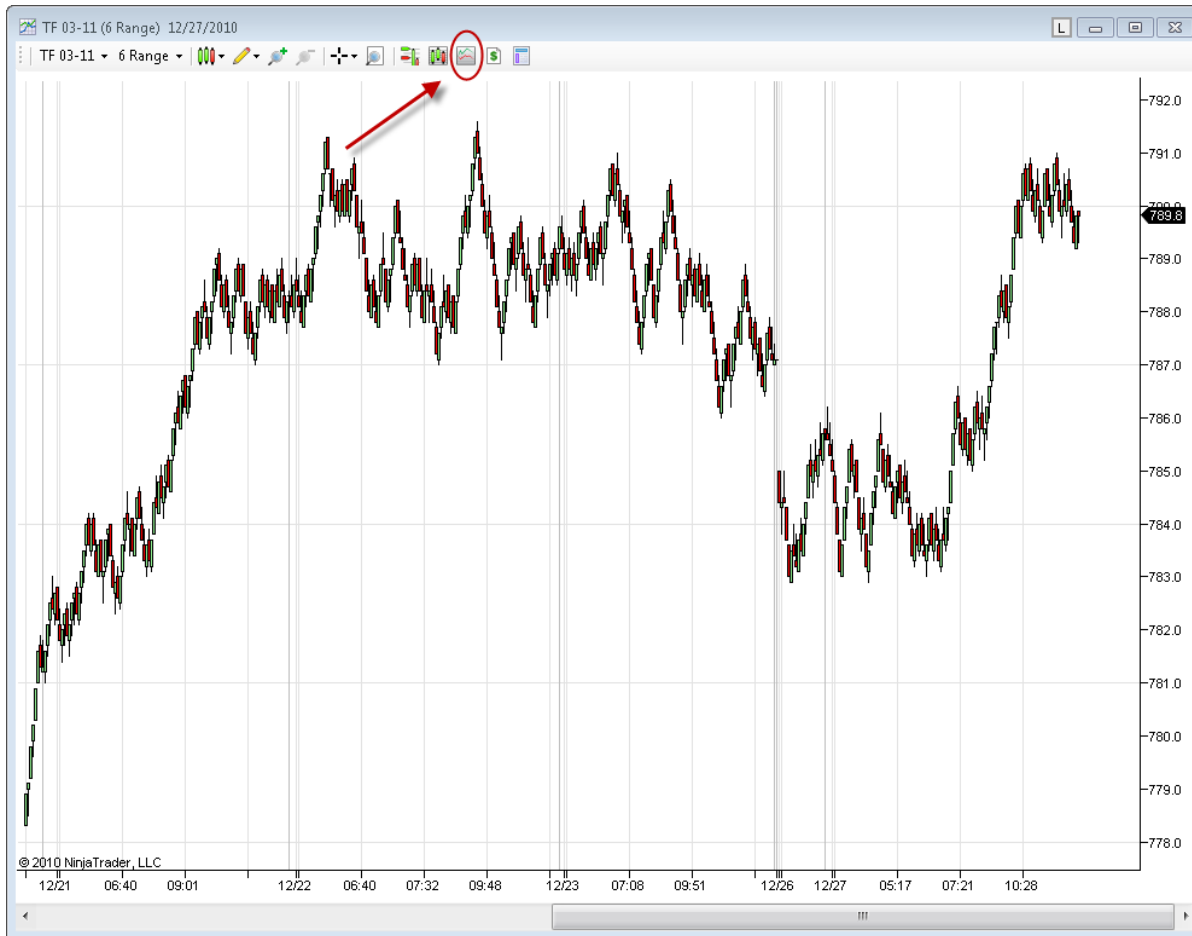
Kinetick

Enter your Kinetick account information.

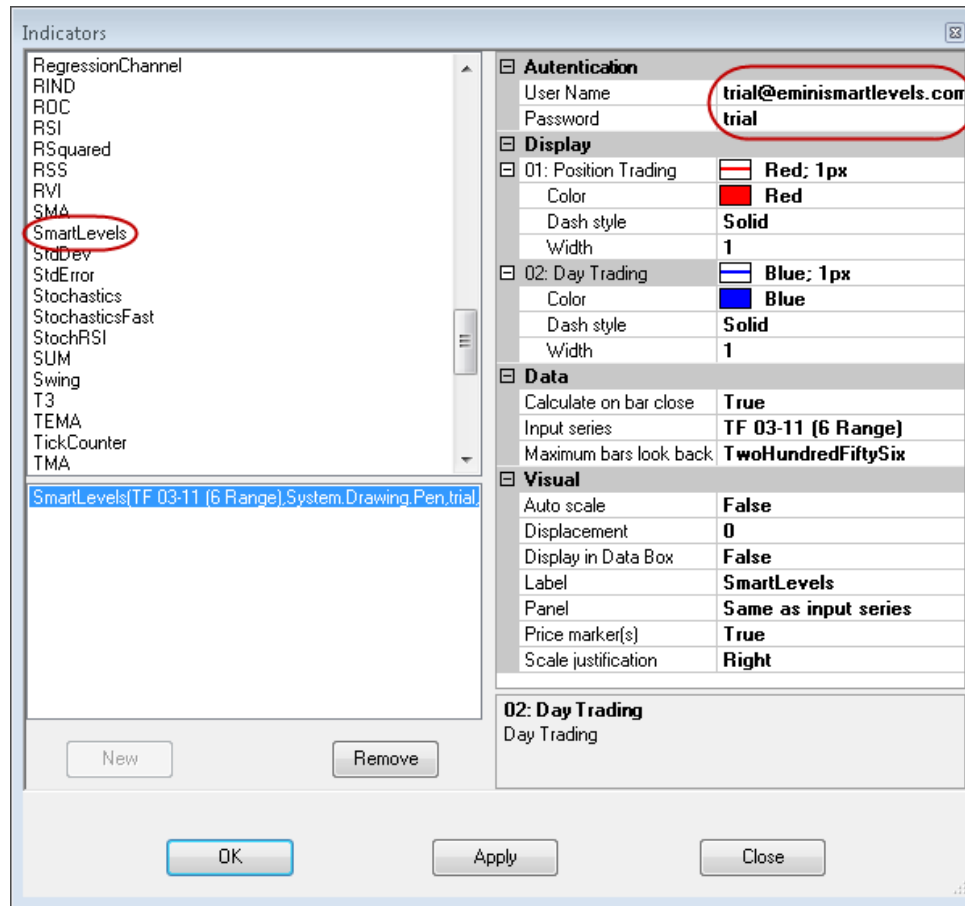


The image shows a login form for Kinetick. It has a light gray background. At the top, the text 'Kinetick' is in bold, followed by 'Enter your Kinetick account information.' Below this, there are two input fields: 'Login:' and 'Password:'. The 'Login:' field is empty, and the 'Password:' field contains 'xxxxxxx'. Below the password field, there are two checkboxes. The first checkbox is labeled 'Use back adjusted data' and is unchecked; this checkbox and its label are circled in red. The second checkbox is labeled 'Participate in the CME data fee waiver program' and is checked. At the bottom right, there are three buttons: '< Back', 'Next >', and 'Cancel'.

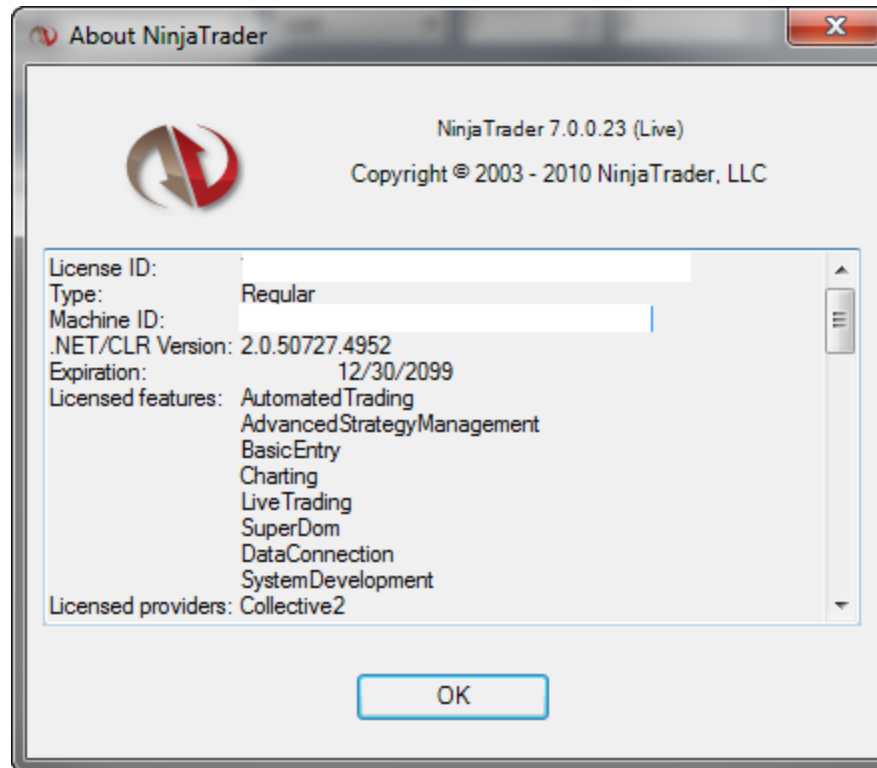
- Select Tools/Account Connections... from the main menu
- Make sure your data connection is not set to use Backward Adjusted data for the same reason as previously explained.



Click the Indicators button



- Select the SmartLevels Indicator in the Indicators pane
- Adjust the settings as desired
- If you are a registered user, enter your User Name and Password
- Even if you do not have valid credentials, you will still be able to view all of the SmartLevels except for the last few trading days



- For registered users, in addition to a valid Email Address and Password, you must send your NinjaTrader Machine ID to Support@EminiSmartLevels.com
- You can find your Machine ID on the NinjaTrader About dialog box



- The SmartLevels will be displayed on the chart and will change for each trading day as indicated by the red arrows
- The circled area highlights the trading that occurred on a Sunday
- The SmartLevels are not provided for the Sunday trading session